

The goal of Master Planning is to develop comprehensive, equitable, integrated and visionary high school campus master plans with authentic school community engagement.



## MADISON HIGH SCHOOL MASTER PLAN

Portland Public Schools | Opsis Architecture + Dao

# MASTER PLAN COMMITTEE 05

# AGENDA

## Review Previous Workshops

Review Outcomes of MPC 04  
African American Outreach  
Franklin Tour

## Building Plan and Cost

Review preferred plan and Cost Plans

## Site and Landscape

Review site updated plans

## Interactive Vision Work Session

Review Vision Statements & Guiding Principles  
Discuss and edit at each table  
Report Back

## Public Comment

## Next Steps

May 23 - Public Outreach and Open House  
June 6 - MPC 06



*“Refine Vision Statements and Guiding Principles”*

# OUTREACH

African American Outreach



# FRANKLIN HS

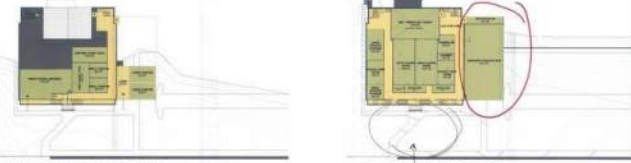
Construction Tour







# Option 2A



Basement-2 Floor Plan

Basement-1 Floor Plan



Lower Floor Plan



Main Floor Plan

Unbuilt like health & wellness in main wing too.  
Yoga meditation TA's Cui



Upper Floor Plan

# Option 2B



Basement-2 Floor Plan

Basement-1 Floor Plan

Where are the doors for the Team Rooms?  
The library is a great idea. I'm thinking of having a reading room.  
The computer lab is a great idea.

OPTION 2A



Lower Floor Plan

Central or E.L. a possible Public/working teen space

A' Ideal



Main Floor Plan

W/ College??

On your Back? Practice

Student access Lower level



Upper Floor Plan

# MPC 4

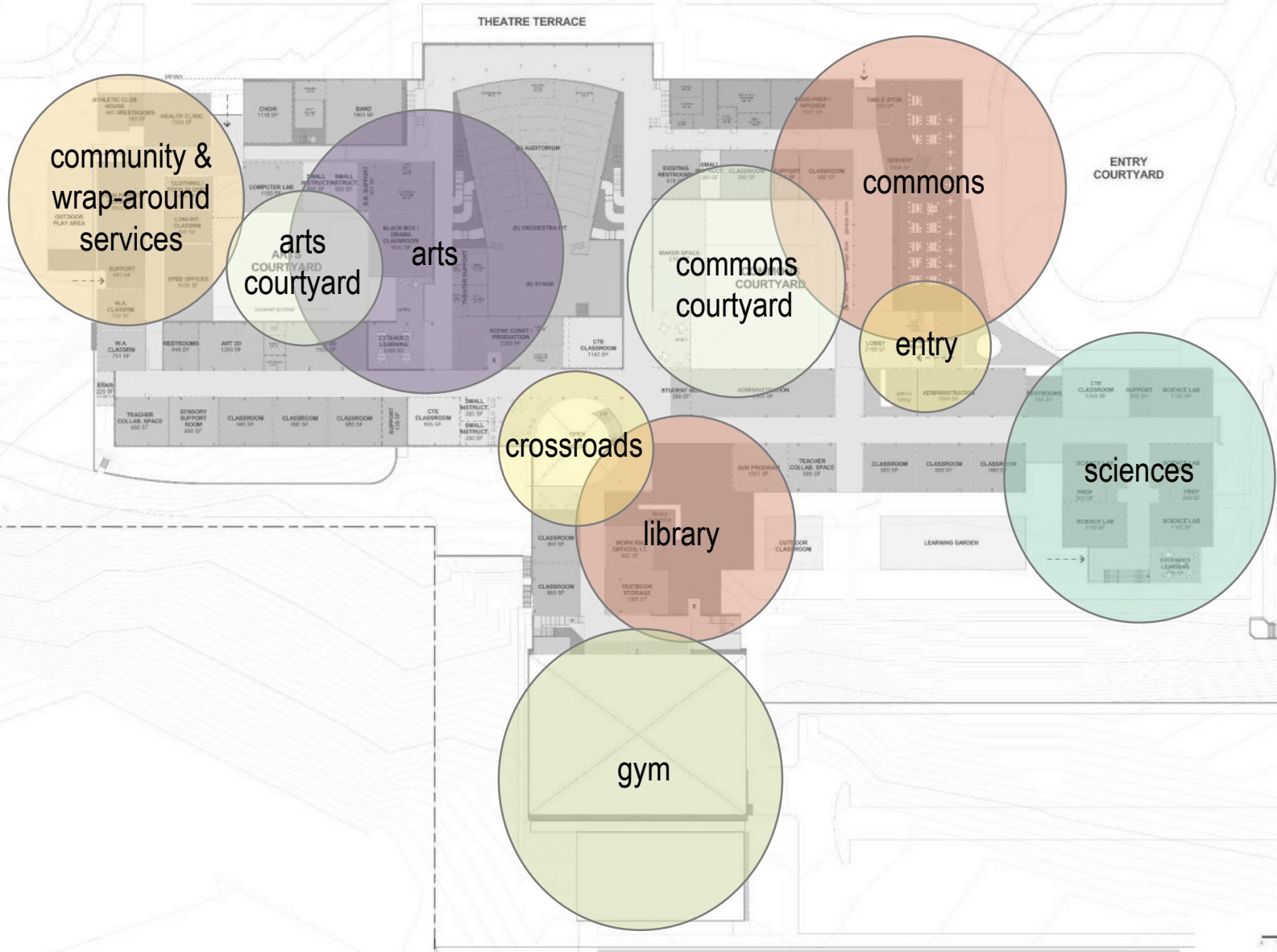




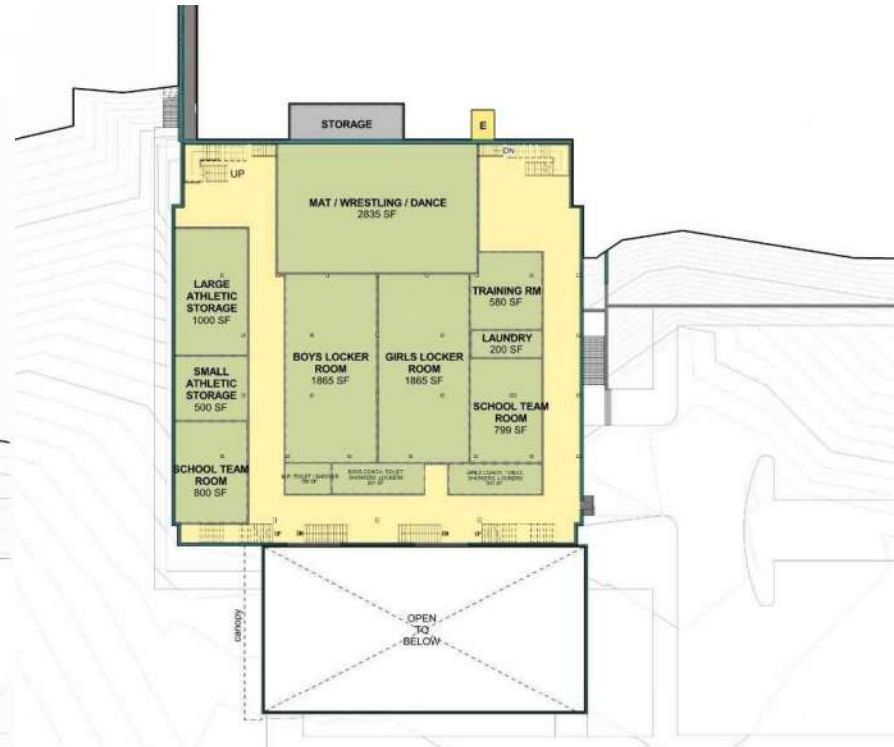
# CONCEPT PLAN



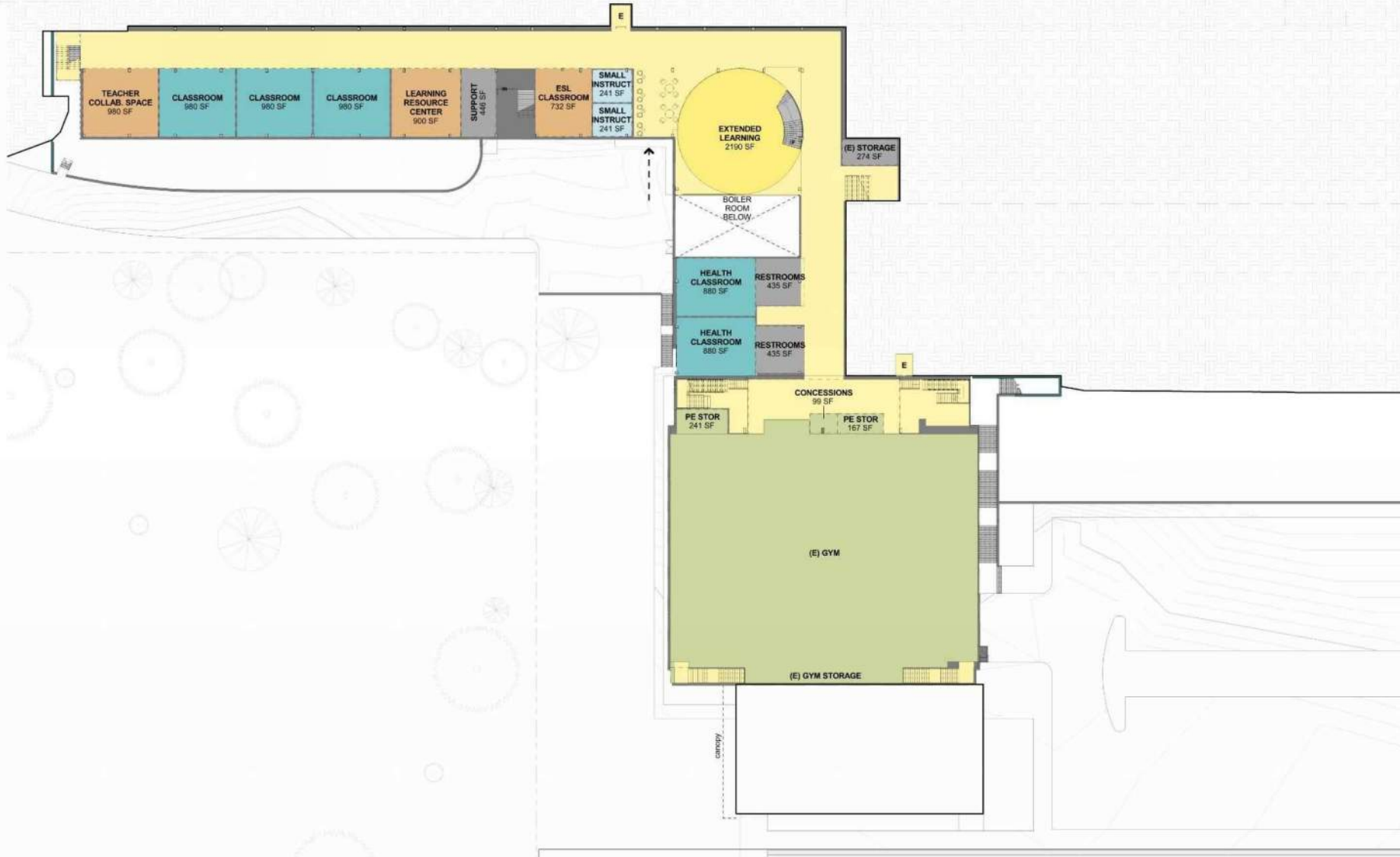
# PROGRAM PLANS - DIAGRAM



# PROGRAM PLANS - BASEMENT



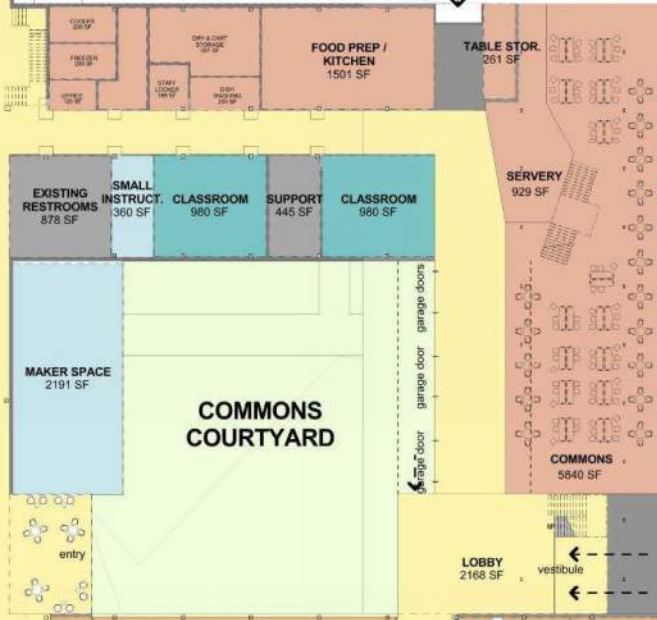
# PROGRAM PLANS – LOWER LEVEL



# PROGRAM PLANS – MAIN LEVEL



**THEATRE TERRACE**



**ENTRY COURTYARD**



# THEATRE TERRACE



ATHLETIC CLUB HOUSE  
460 SF

RESTROOMS  
213 SF

HEALTH CLINIC  
1359 SF

CHOIR  
1118 SF

MUSIC LIBRARY  
500 SF

BAND  
1865 SF

TEEN PARENT SERVICES  
1603 SF

CLOTHING / FOOD CLOSET  
600 SF

COMPUTER LAB  
1100 SF

SMALL INSTRUCT.  
500 SF

SMALL INSTRUCT.  
500 SF

B.B. SUPPORT  
401 SF

WASH. ROOM  
100 SF

WATERMENT STORAGE  
50 SF

OUTDOOR PLAY AREA

LOW-INT. CLASSRM  
600 SF

ARTS COURTYARD

BLACK BOX / DRAMA CLASSROOM  
1600 SF

(E) AUDITORIUM

(E) ORCHESTRA PIT

(E) STAGE

EXISTING RESTROOMS  
878 SF

SMALL INSTRUCT. CLASSROOM  
360 SF

SUPPORT CLASSROOM  
445 SF

CLASSROOM  
980 SF

SUPPORT  
682 SF

SPED OFFICES  
1420 SF

RESTROOMS  
648 SF

ART 2D  
1200 SF

ART 3D  
1500 SF

EXTENDED LEARNING  
1469 SF

SCENE CONST. PRODUCTION  
2288 SF

CTE CLASSROOM  
1140 SF

MAKER SPACE  
2191 SF

COMMONS COURTYARD

STAIR  
225 SF

TEACHER COLLAB. SPACE  
980 SF

SENSORY SUPPORT ROOM  
900 SF

CLASSROOM  
980 SF

CLASSROOM  
980 SF

CLASSROOM  
980 SF

SUPPORT  
439 SF

CTE CLASSROOM  
955 SF

SMALL INSTRUCT.  
250 SF

SMALL INSTRUCT.  
250 SF

STUDENT GOV  
356 SF

ADMINISTRATION  
2605 SF

OPEN TO BELOW

LIBRARY  
5893 SF

SUN PROGRAM  
1001 SF

TEACHER COLLAB. SPACE  
968 SF

CLASSROOM  
980 SF

WORK RM. OFFICES, LT.  
800 SF

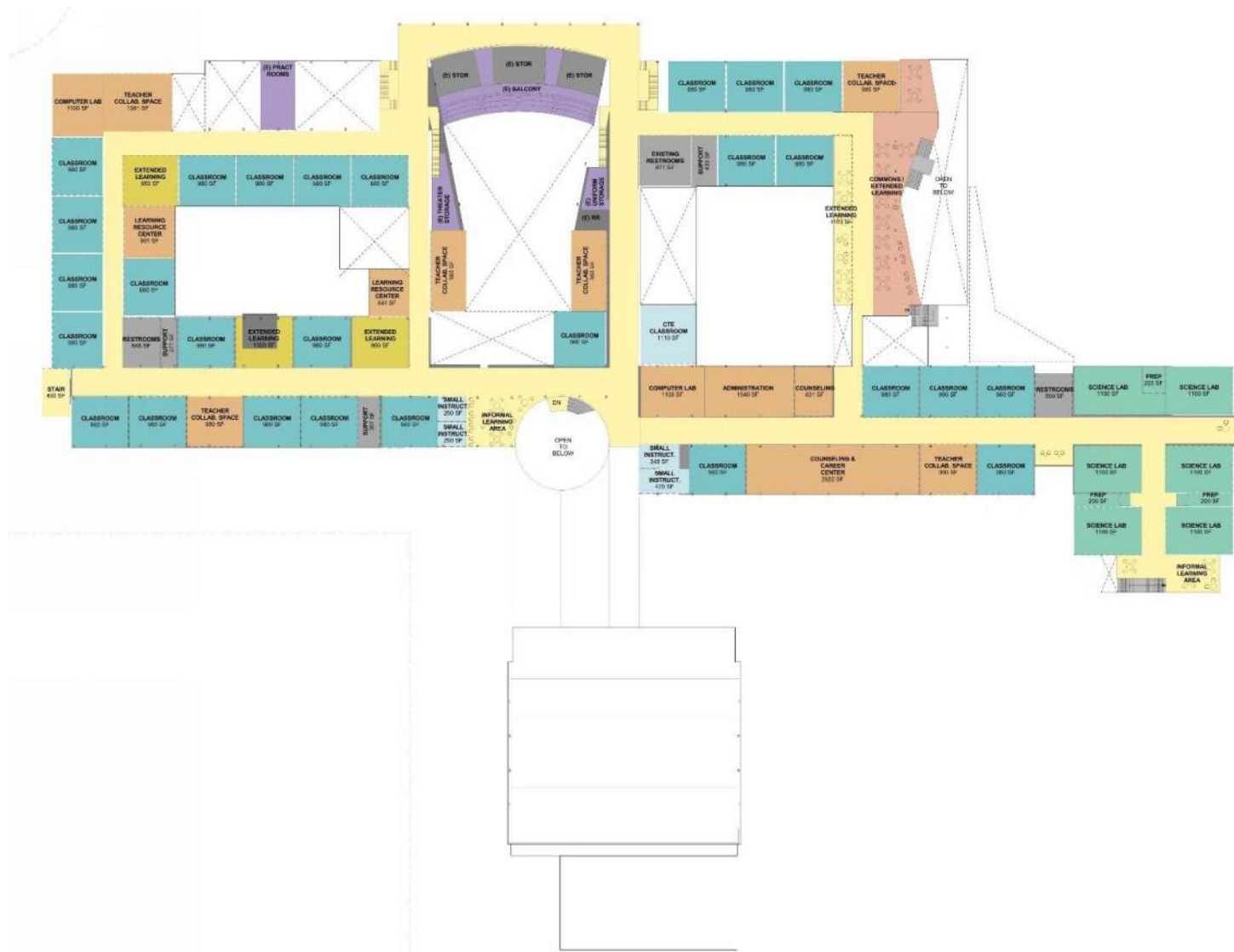
TEXTBOOK STORAGE  
1065 SF

OUTDOOR CLASSROOM

CLASSROOM  
980 SF

E

# PROGRAM PLANS – UPPER LEVEL









# EXISTING SITE



# VIEWS

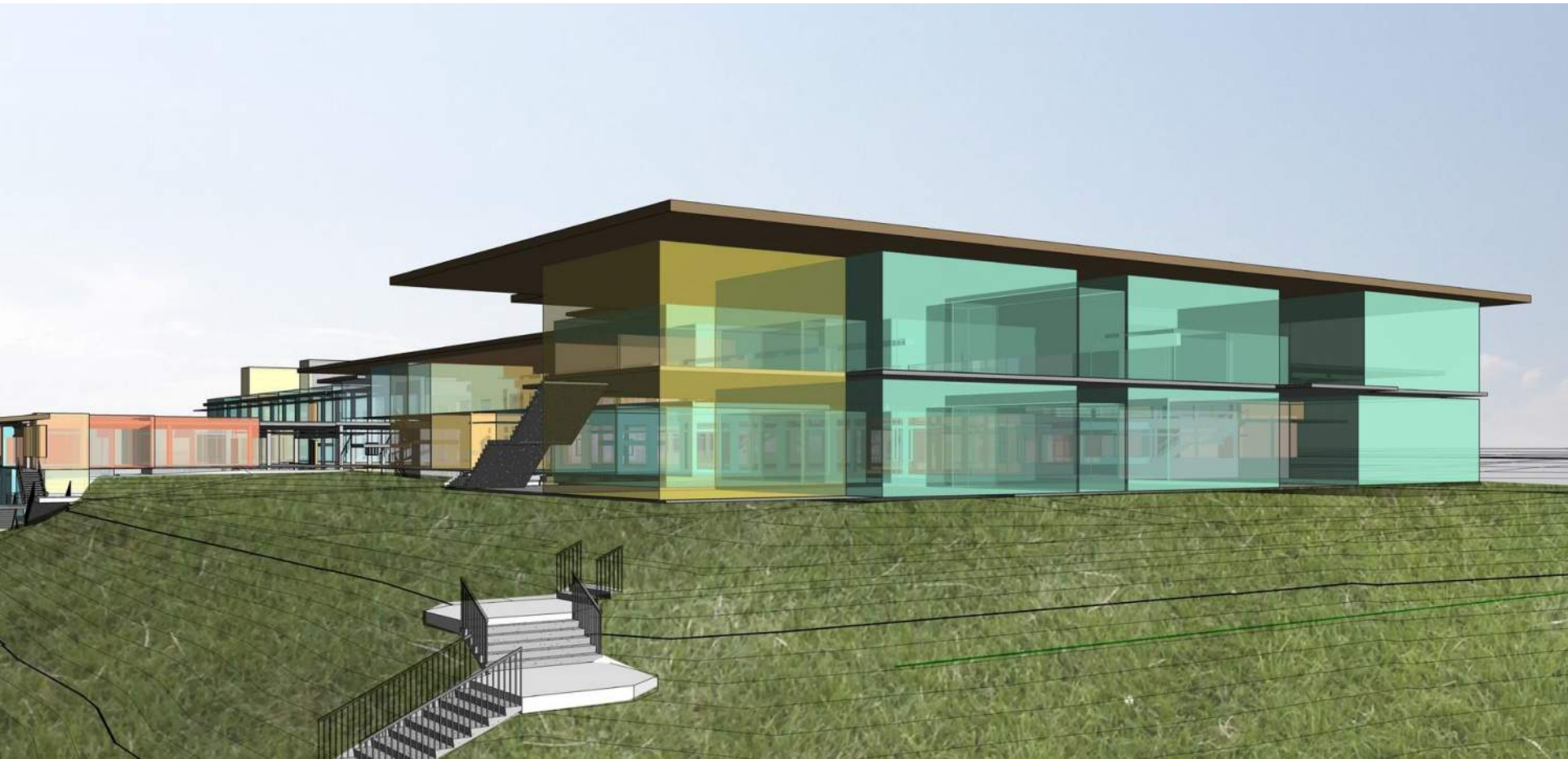


# VIEWS





# VIEWS



# VIEWS





# COST PLANS – BASEMENT AND LOWER LEVEL

## Basement-2 Area Takeoff

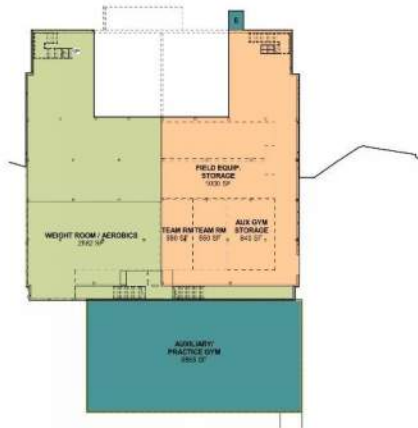
- LIGHT RENOVATION = 8,089 SF
- MEDIUM RENOVATION = 7,251 SF
- NEW CONSTRUCTION = 5,972 SF

## Basement-1 Area Takeoff

- LIGHT RENOVATION = 5,278 SF
- MEDIUM RENOVATION = 14,419 SF
- NEW CONSTRUCTION = 2,985 SF

## Lower Floor Area Takeoff

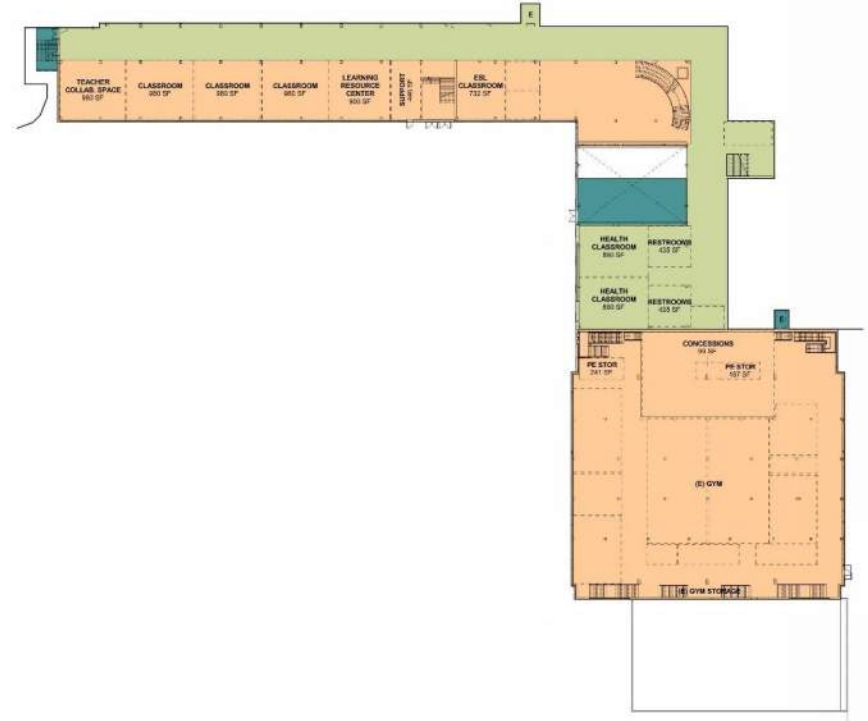
- LIGHT RENOVATION = 12,208 SF
- MEDIUM RENOVATION = 28,697 SF
- NEW CONSTRUCTION = 1,527 SF



Basement-2 Area Plan  
PLS 17-1007



Basement-1 Area Plan  
PLS 17-1007



Lower Floor Area Plan  
PLS 17-1007

0' 10' 20' 30'

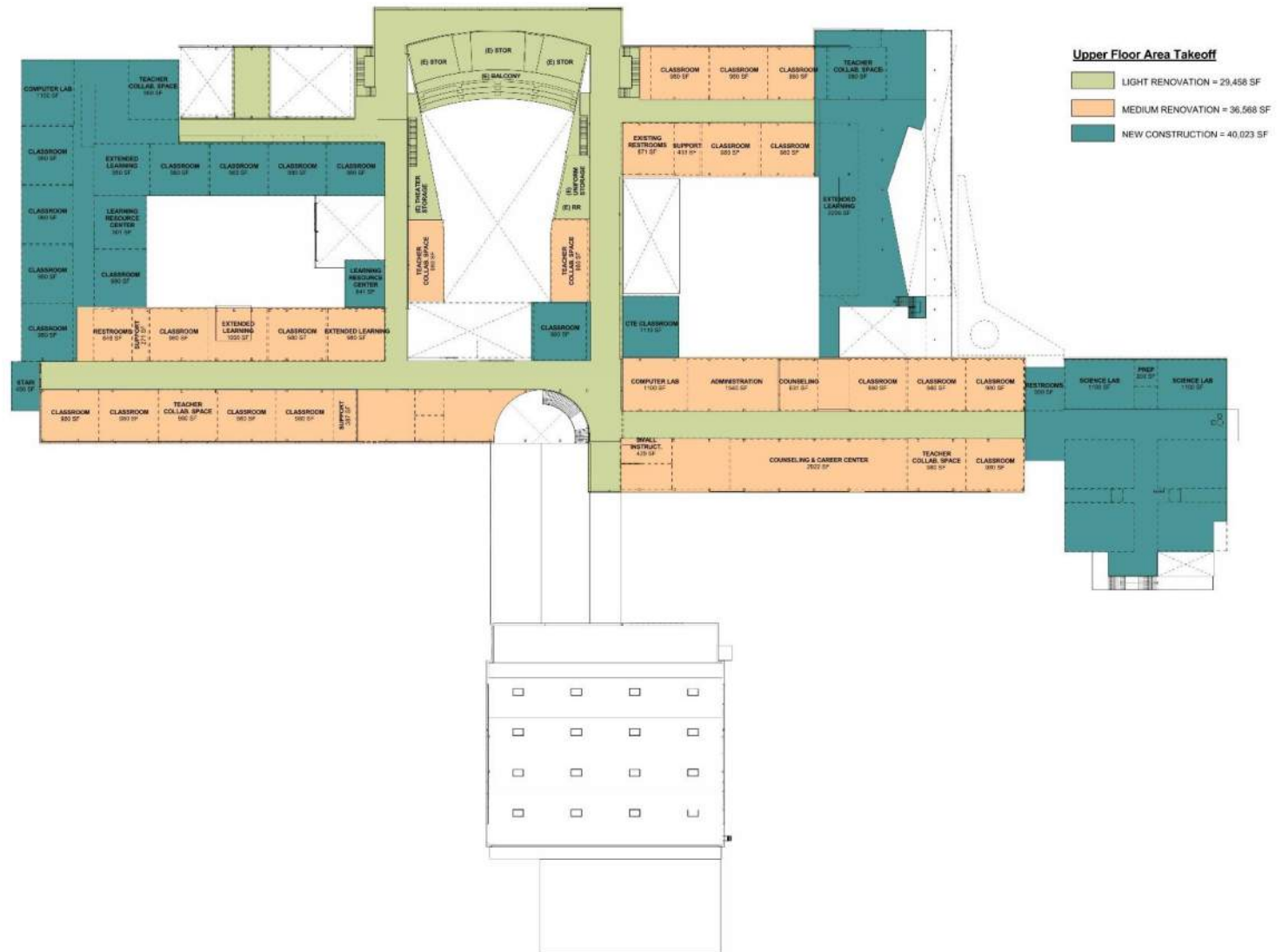
# COST PLANS – MAIN FLOOR PLAN



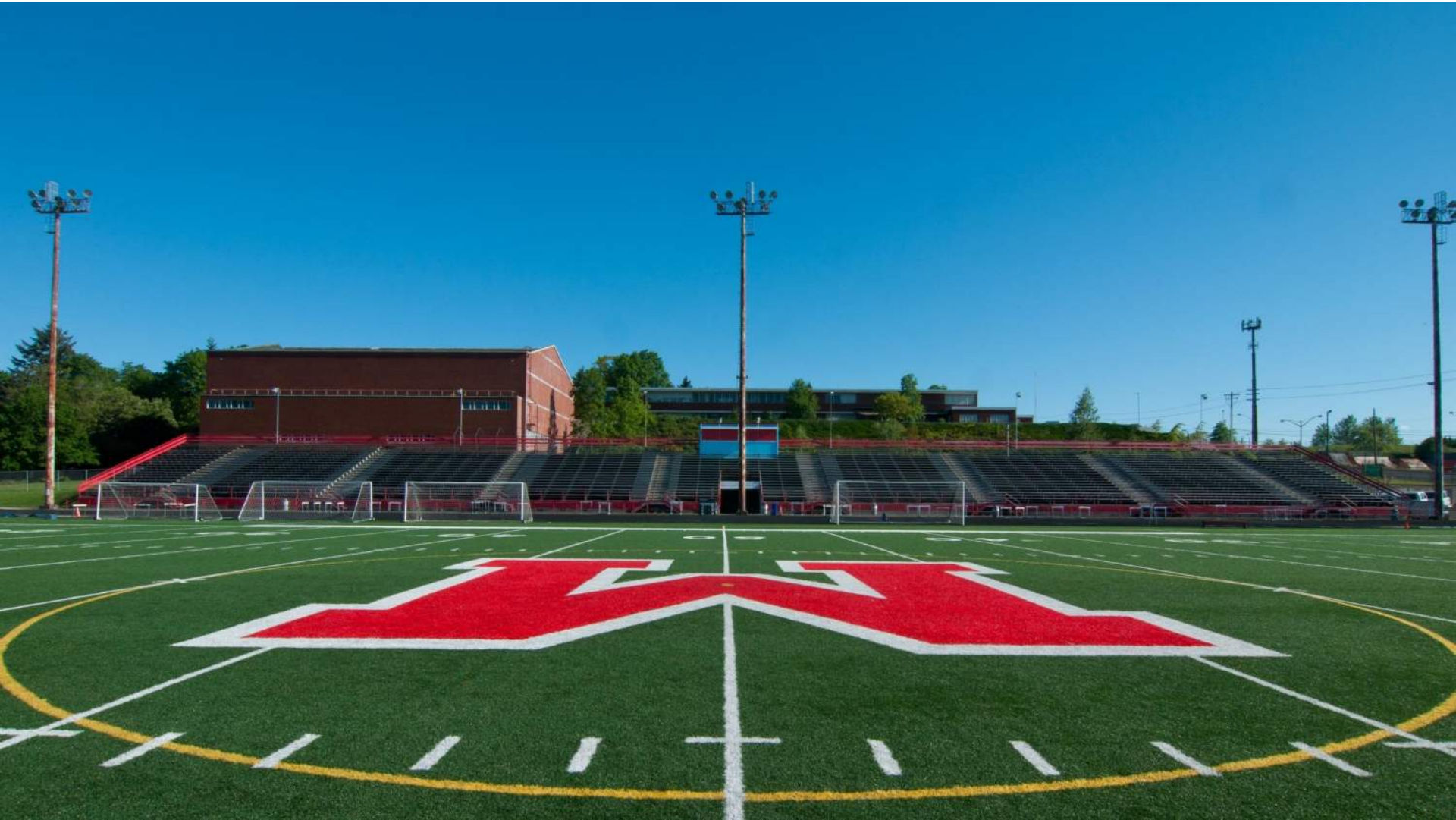
Main Floor Area Plan



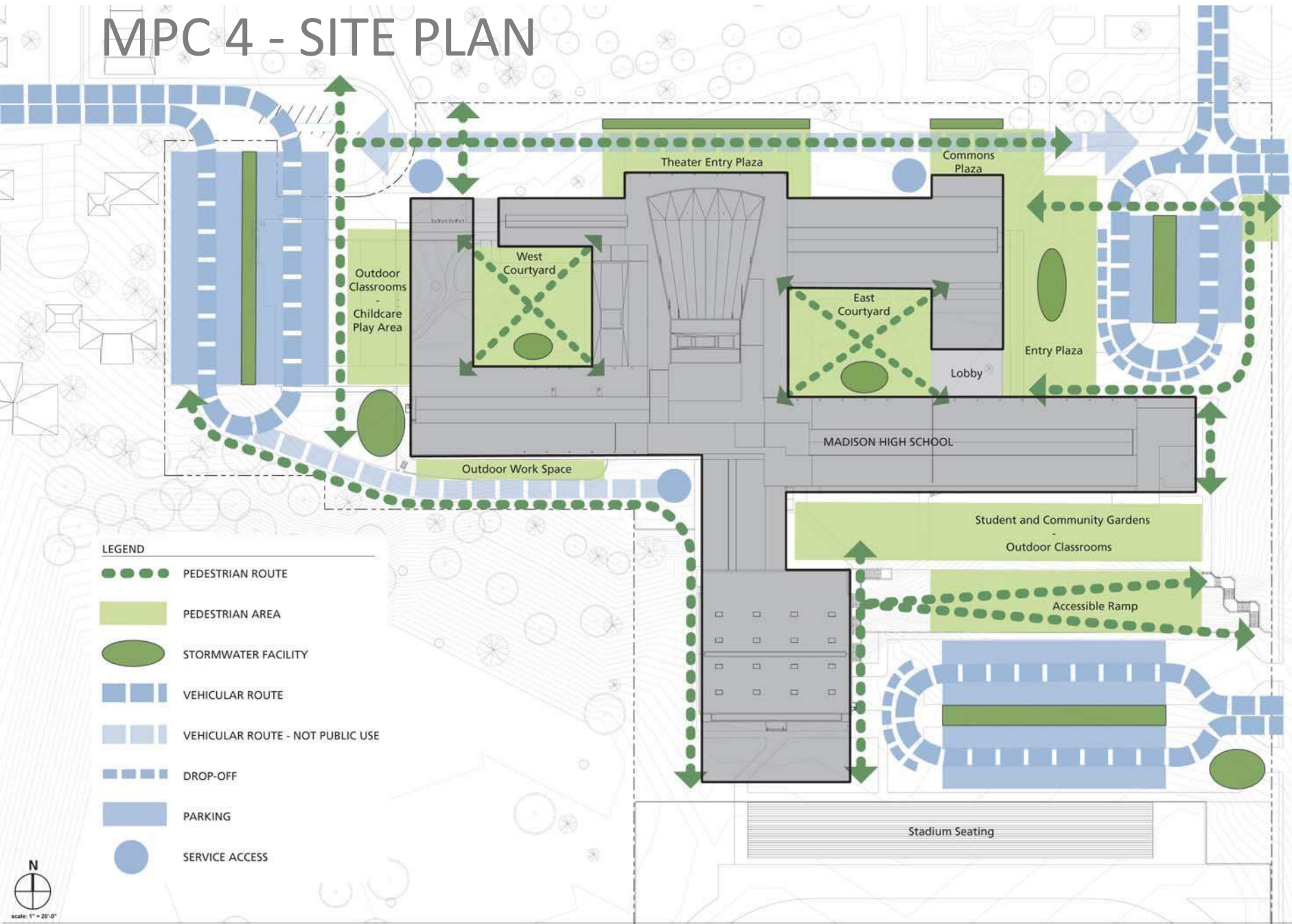
# COST PLANS – UPPER LEVEL




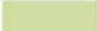






# VIEWS



# MPC 4 - SITE PLAN



## LEGEND

-  PEDESTRIAN ROUTE
-  PEDESTRIAN AREA
-  STORMWATER FACILITY
-  VEHICULAR ROUTE
-  VEHICULAR ROUTE - NOT PUBLIC USE
-  DROP-OFF
-  PARKING
-  SERVICE ACCESS



# MPC 4 – VOTING BOARDS

Community / Student Garden



Individual Connections to Nature



Outdoor STEM

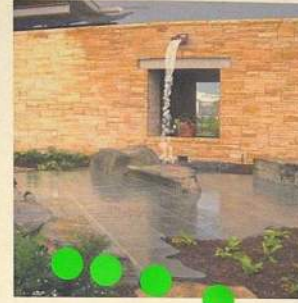


Outdoor Classrooms

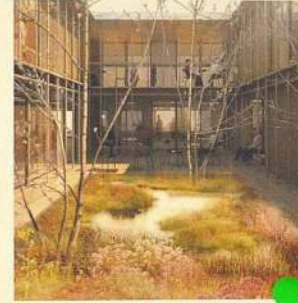
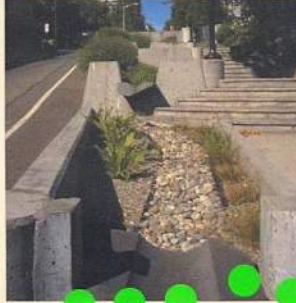
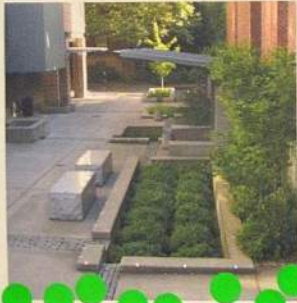


# MPC 4 – VOTING BOARDS

Stormwater Facilities



Extensive Eco-Roof

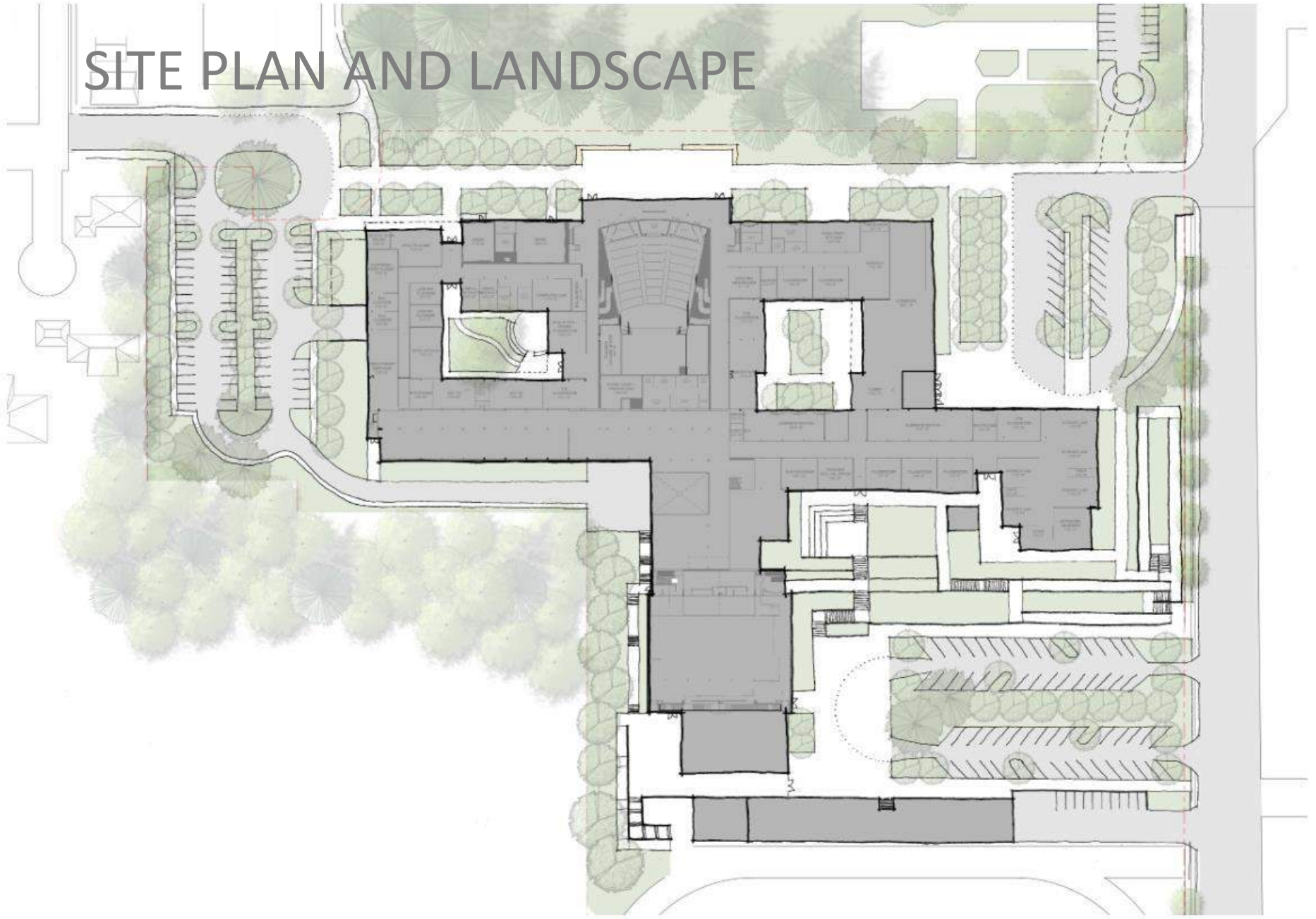


# MPC 4 – VOTING BOARDS

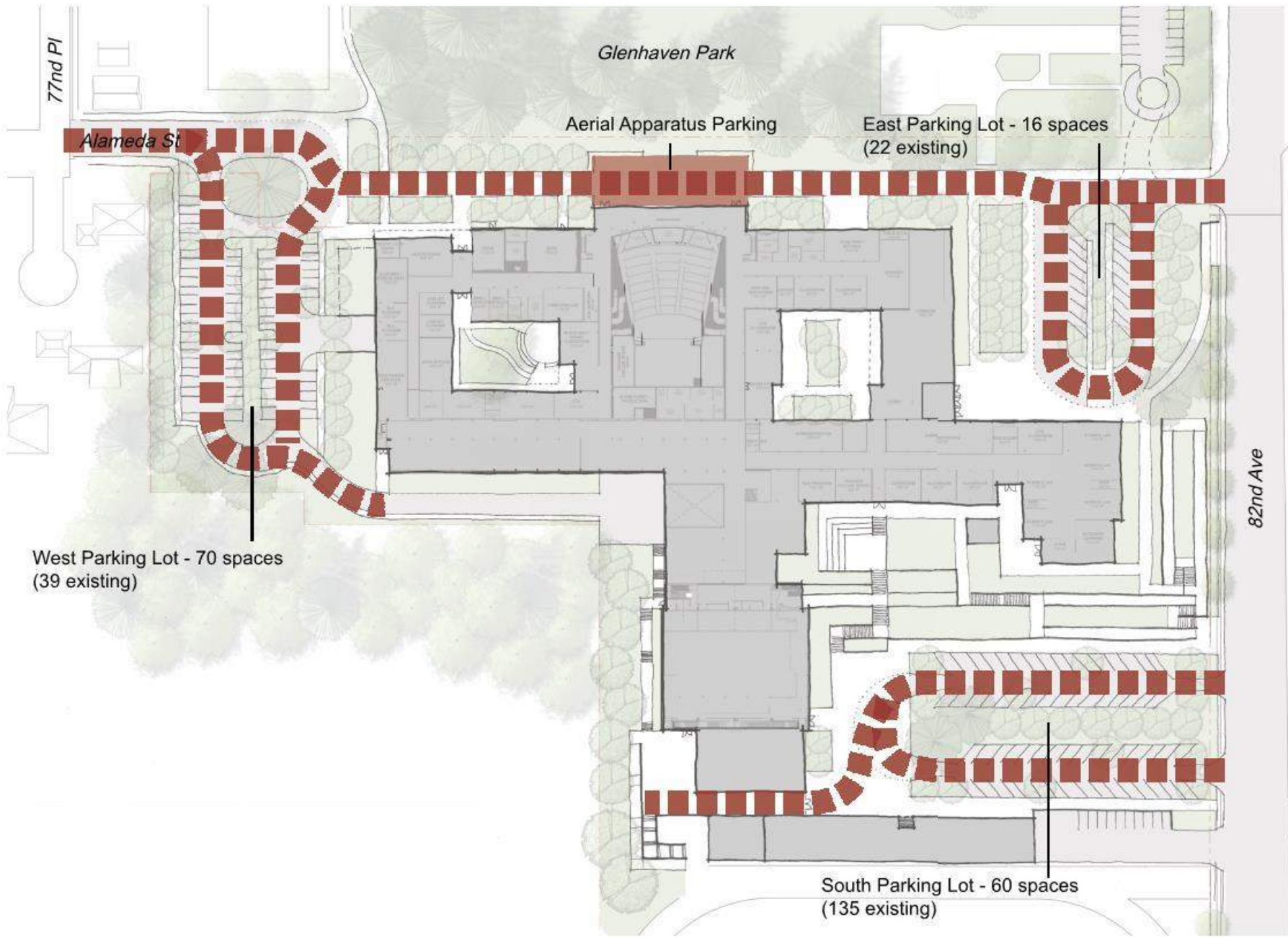




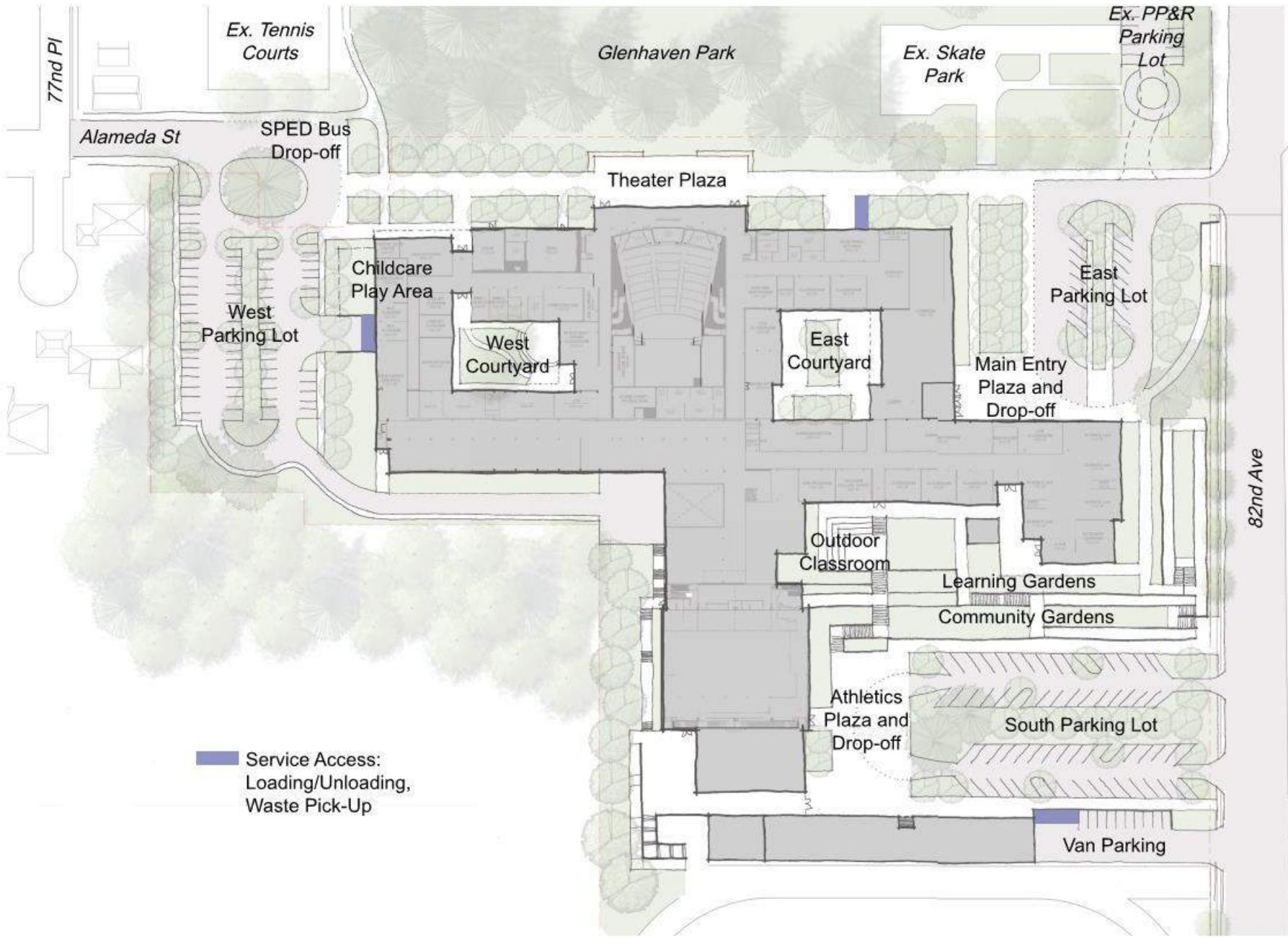
# SITE PLAN AND LANDSCAPE



Site Plan

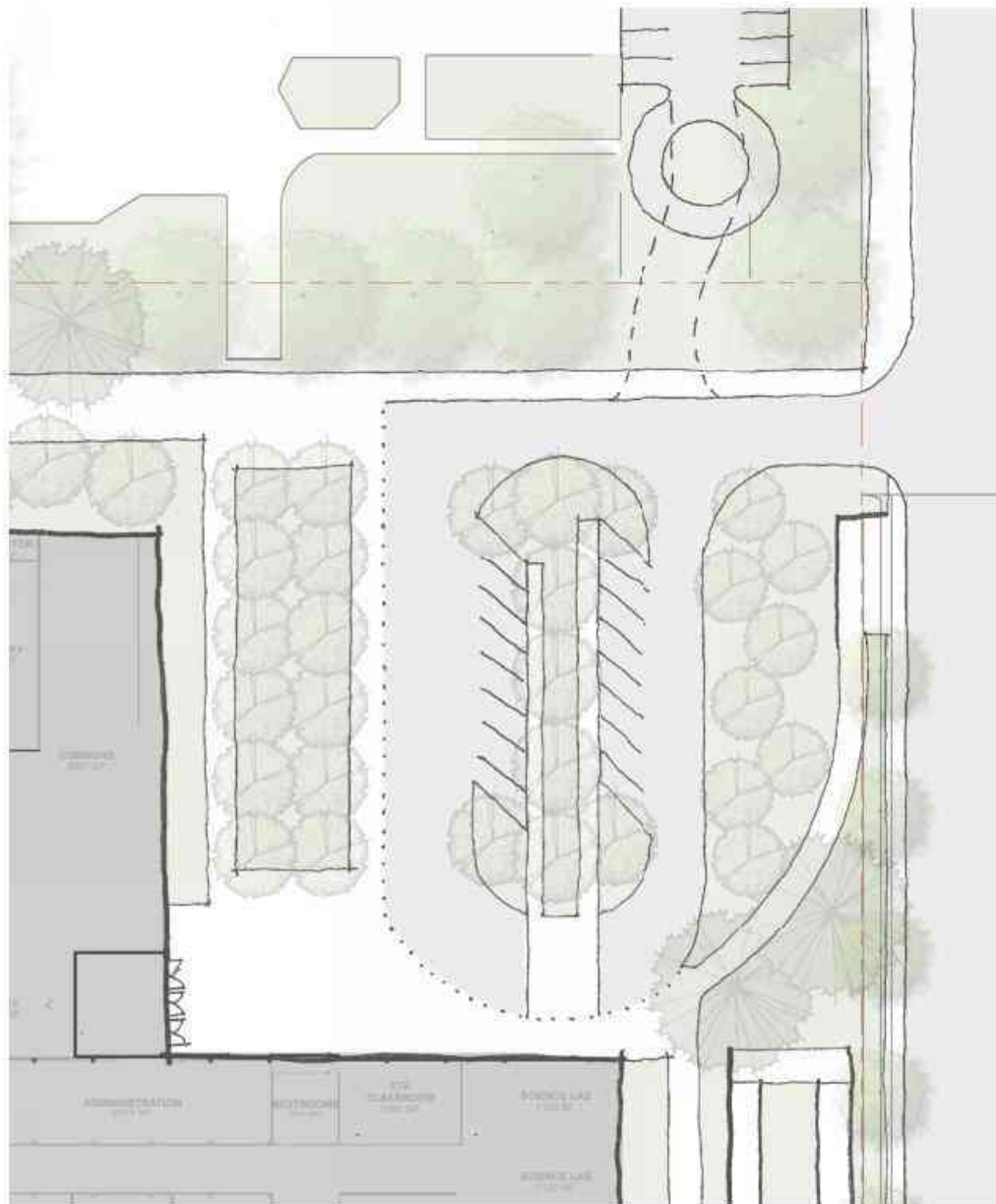


Vehicular Areas and Fire Lanes

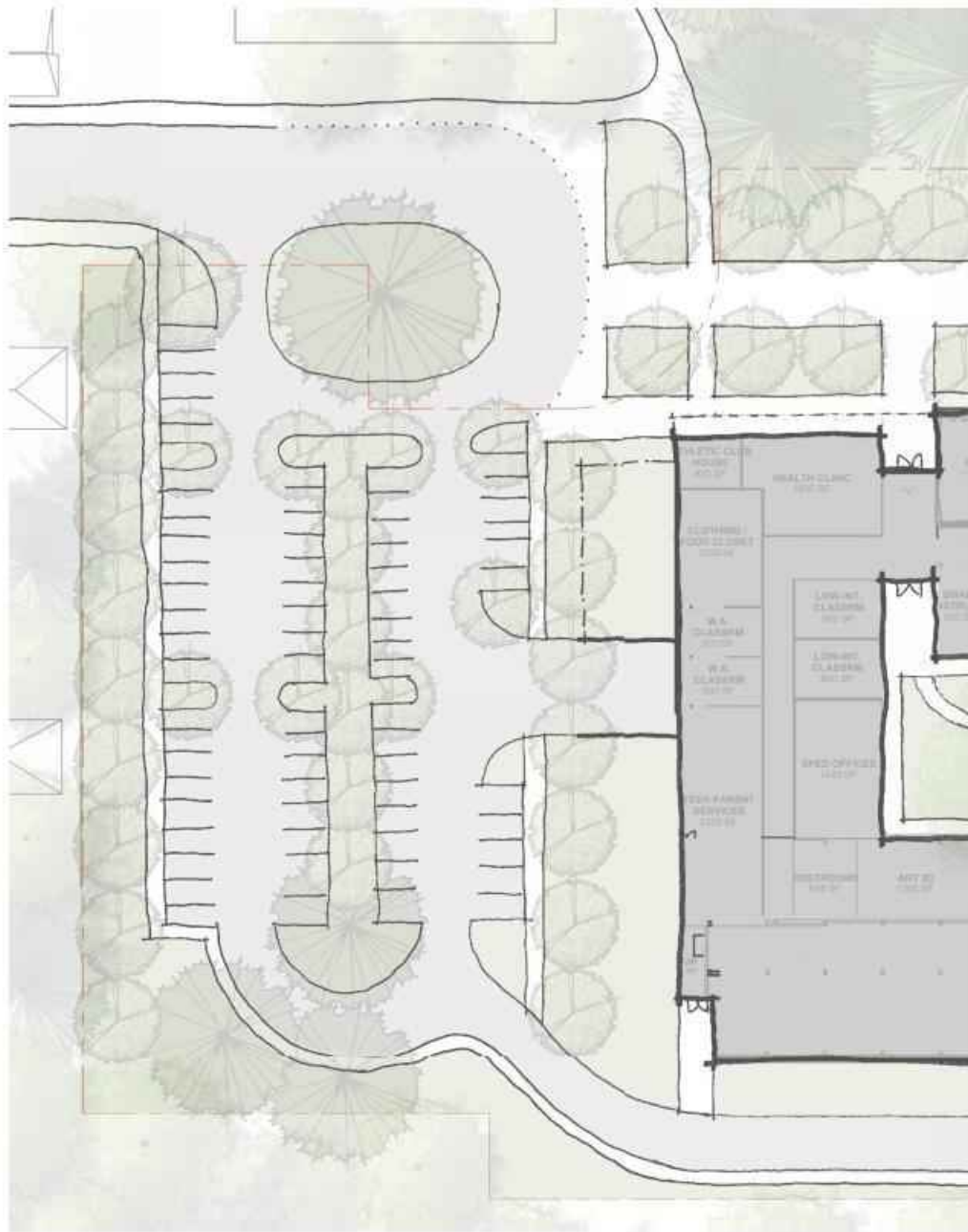


Service Access:  
 Loading/Unloading,  
 Waste Pick-Up

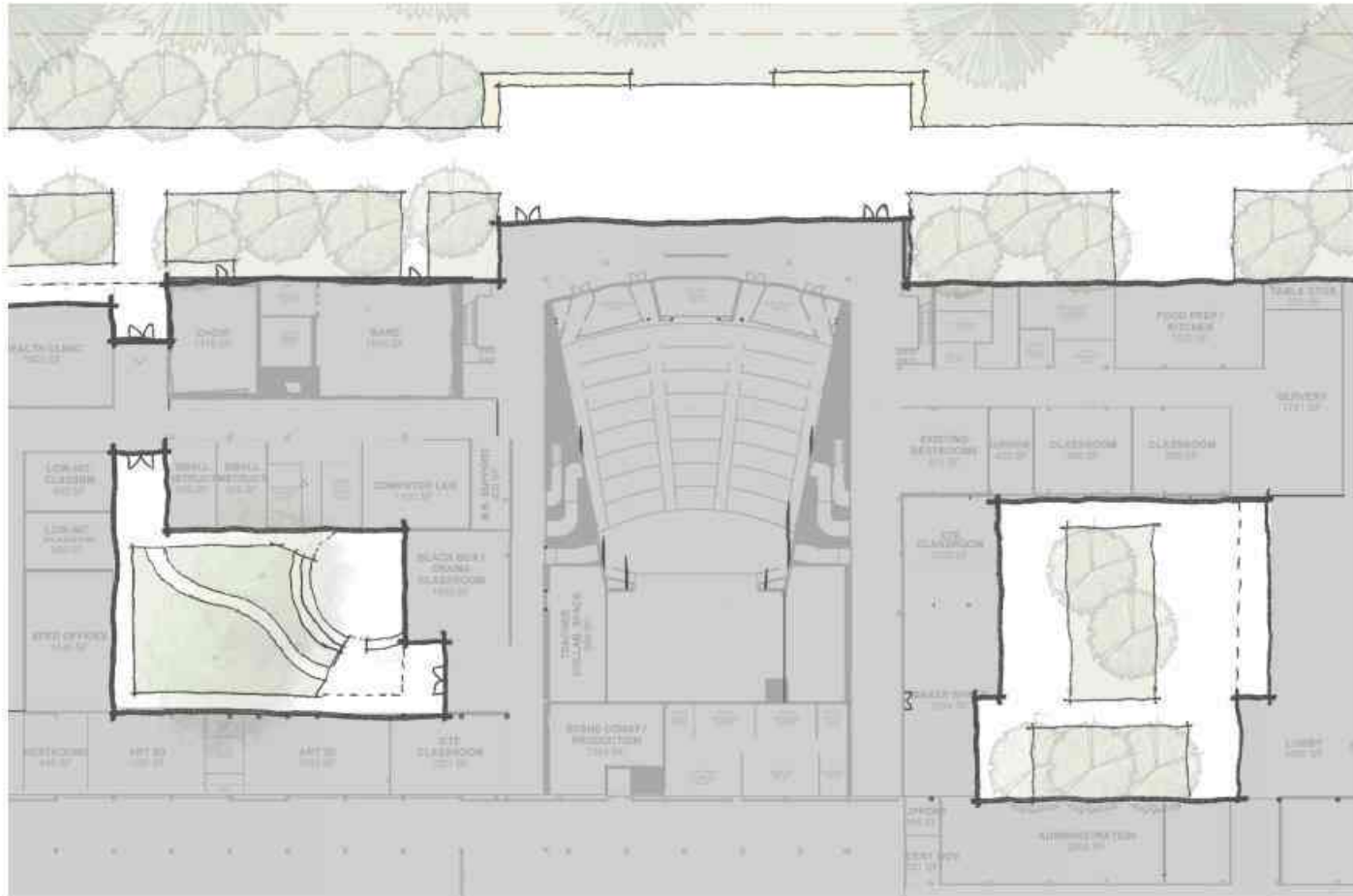
Annotated Site Plan



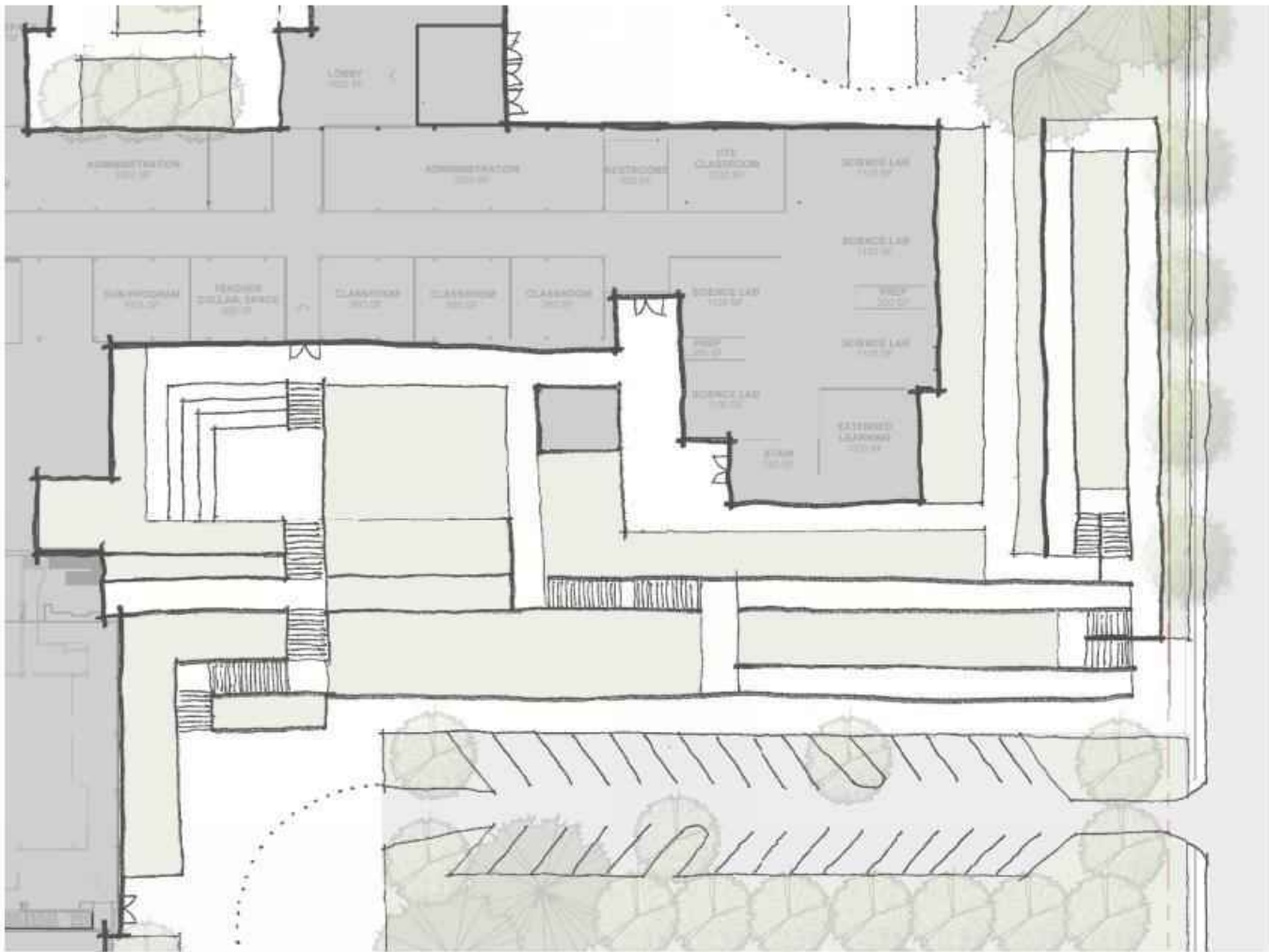
Enlarged Site Plan :: East Entry



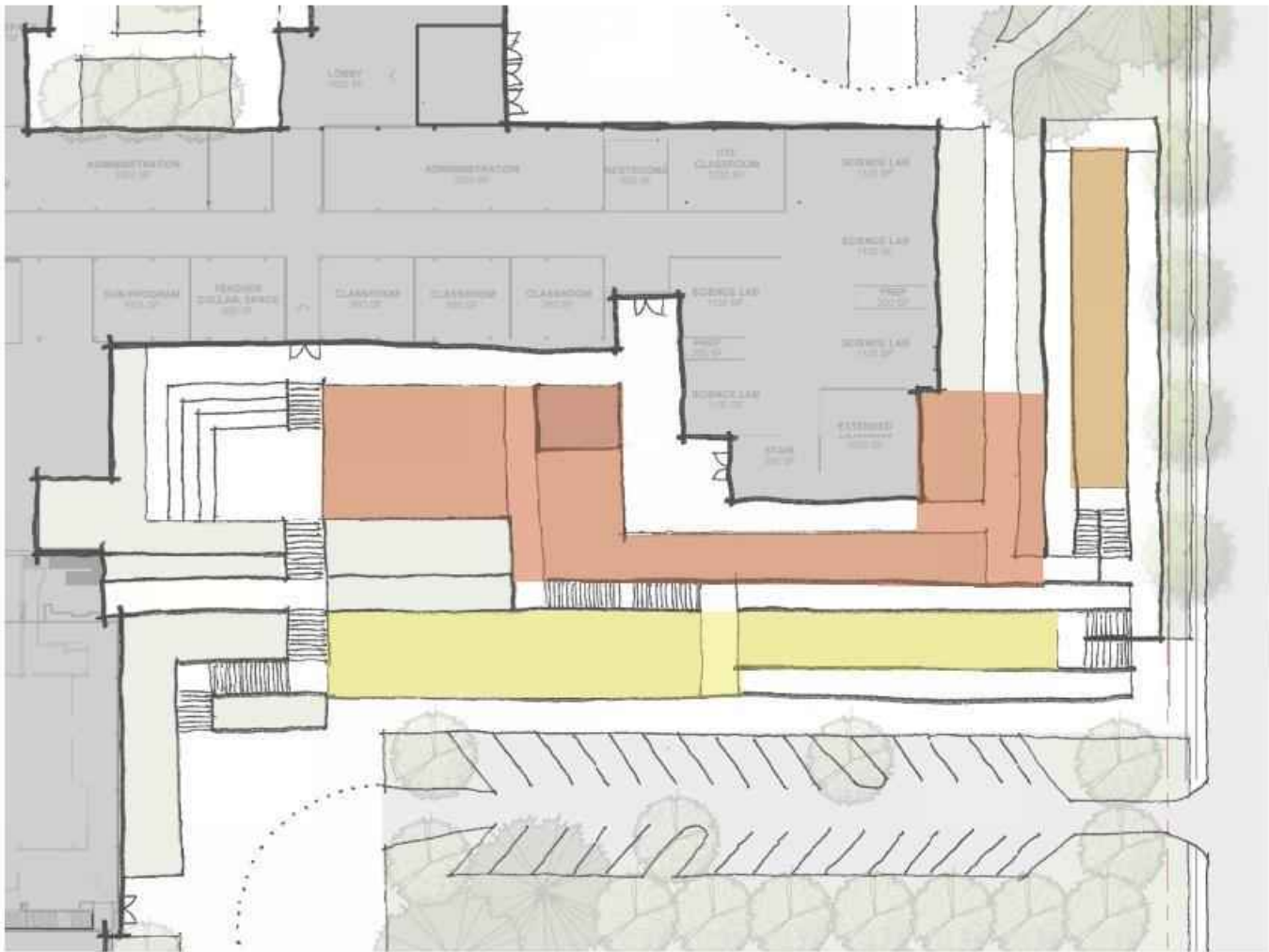
Enlarged Site Plan :: West Entry



Enlarged Site Plan :: Theater Plaza and Interior Courtyards

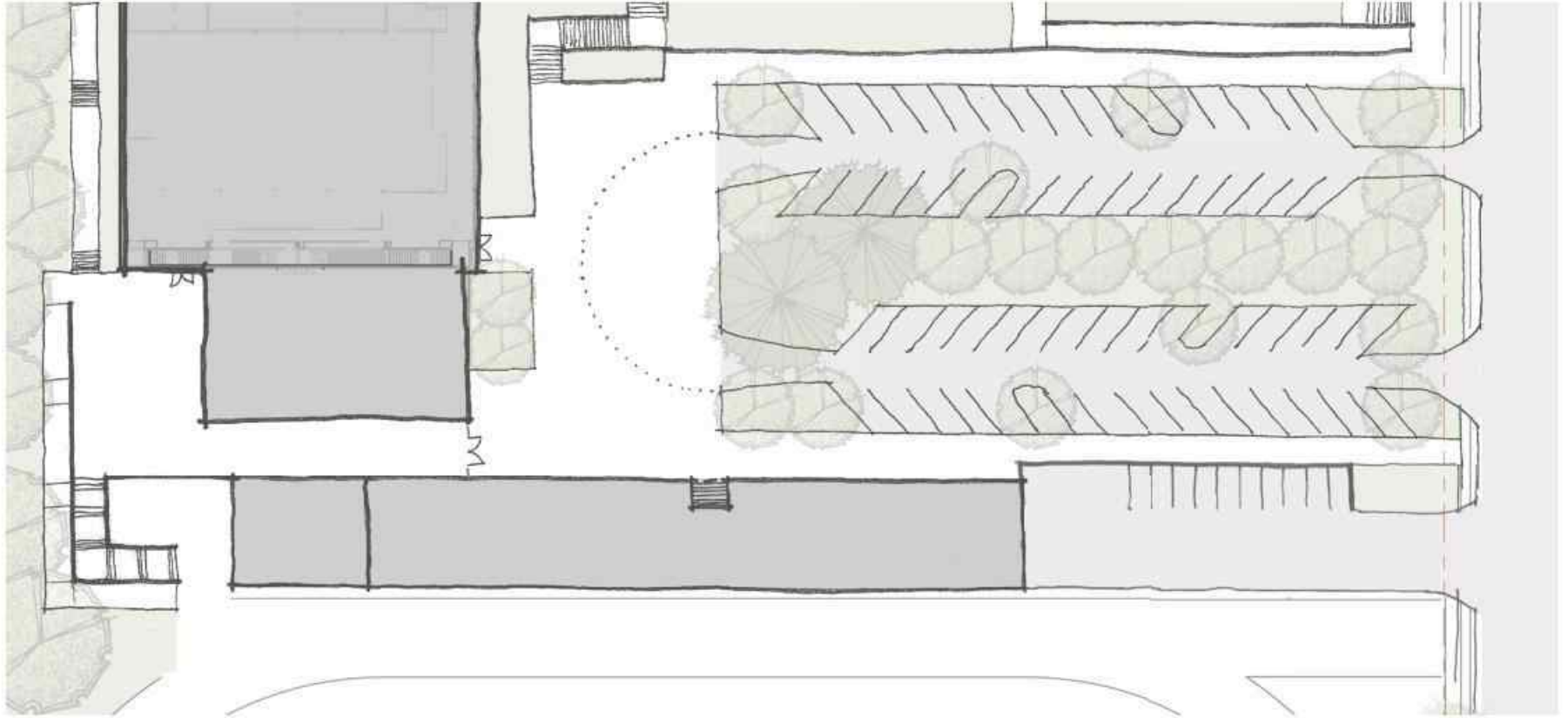


Enlarged Site Plan :: South Terracing



Enlarged Site Plan :: South Terracing





Enlarged Site Plan :: Athletics Entry

# VISION STATEMENT

The redeveloped Madison Campus will be a place where students are challenged to succeed and achieve to their fullest potential as part of a diverse community.

Teaching and learning happens everywhere, and Madison will leverage that as an engaging, safe and curious learning atmosphere. Madison will be a school that helps students meet real world problems with creative solutions, and to learn to be adaptable to changing societal needs.

Madison will reflect the vigor and diversity of the Madison community as it is today, and build on those strengths as this community hub for East Portland grows into the future.

---

Madison High School is the heart of a unique multi-cultural East Portland community, and the transformed school seeks to reflect and build upon the neighborhood's strengths in its presence and spaces.

The school will create a challenging and engaging learning environment that helps students to be agile and adaptable in the 21st Century and to meet real world problems with creative solutions.

---

Madison High School's redesign project aims to create a diverse and community-centered school that prepares its students to address the most pressing issues of the 21st century.

Through challenging and engaging education, students will be encouraged to embrace adaptable models for the future, meet real world problems with agility and creativity, and build on the strength of a diverse community.

# GUIDING PRINCIPLES

**Create State-of-the-Art 21st century learning environments** – Transform the school’s facilities to stimulate learning and create a spirit of place.

**Community Connections** – Make the school the heart of the Neighborhood.

**Social and Academic Connections** – Create a microcosm of the neighborhood inside Madison HS.

**Indoor / Outdoor Connections** – Create stronger connections between the school’s interior and its outdoor courts and garden.

**Example of Sustainability** – connect the new facility to nature and natural systems.

**Access and Security** – Create safe and convenient access points.

**Improved circulation zones within the building** – Create organizational clarity and improve wayfinding.

**Make the Most of the Site’s Environment** – Address the school’s topography while enhancing its use of solar access and borrowed natural scenery.

**Enhance the Building’s Systems** – Modernize the school’s structural, mechanical, electrical, and technology systems.

# MPC NEXT STEPS

## Next Steps

Tour of Shattuck Hall - PSU

Open House

MPC 06

May 10

May 23

June 06

